

Energy Storage System (ESS) for
commercial and industrial applications -

STORION SERIES T50/T100



✓ Key Features



UPS ability



Off-grid ability



Modular design



Easy installation and low maintenance

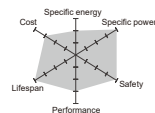


24/7 Monitoring with local interface



Real-time Monitoring

All systems can be monitored
by **Web** and **iOS/Android APP**.

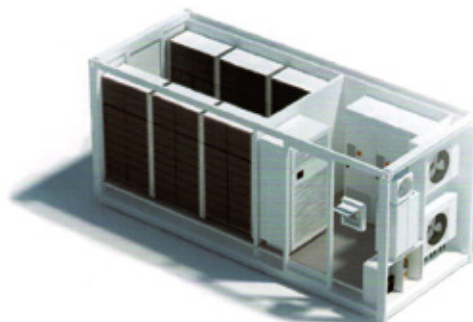


Safest Chemistry

AlphaESS uses Li-phosphate for its
excellent safety and long lifespan.



We specialize in integrated outdoor proof container solutions and with different demands we can provide diverse solutions. We can equip a 10'GP container with up to 309 kWh energy storage capacity and for a 20'GP container the capacity can be increased to 825 kWh. For more detailed information please contact an AlphaESS sales representative or a technician.



About AlphaESS

As one of the earliest pioneers in energy storage market with lithium iron technology, AlphaESS has a vision to pave the path for everyone in the world to enjoy clean energy one day.

AlphaESS is a multinational company that currently has more than 10'000 residential and commercial systems running in 30 countries globally and its products are accredited by IEC, TÜV, CEC and many other international standards.

All AlphaESS energy systems are integrated with smart energy management solutions. AlphaESS is committed to revolutionize the future energy network through our patented German technologies.



Official Website



Scan to download
APP (iOS/Android)



Twitter



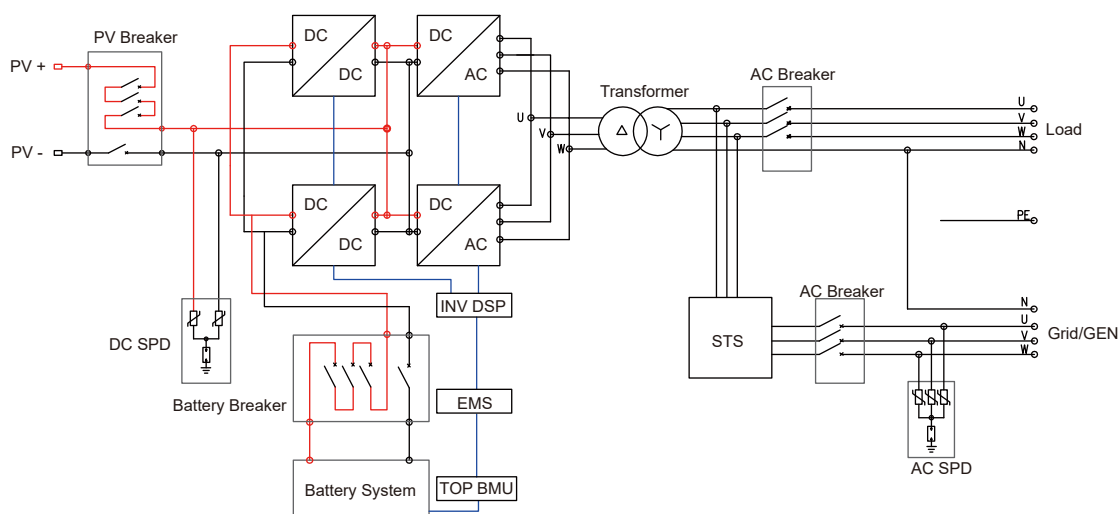
FaceBook

System Specification				
Model	Storion-T50		Storion-T100	
Nominal Output Power	50 kW		100 kW	
Max. PV Input Power	100 kW		200 kW	
Capacity Range	28.7 kWh ~ 1032.2 kWh (90% DoD)			
Battery Chemistry	LFP (LiFePO4)			
IP Protection	IP21/IP65 (in Container)			
Warranty	3 Year Product Warranty, 10 Year Performance Warranty			
Inverter Technical Specification				
Max. PV Input Current	110 A	220 A	Phase	Three-Phase
PV Input Voltage Range	520 ~ 900 V		Nominal AC Current	72 A 144A
MPPT Number	1		Off-grid Voltage Range	360 ~ 440 V
Battery Voltage Range	250 ~ 520 V		Rated Frequency	50/60 Hz
Max. Charging/Discharging Current	150 A	300 A	Backup	UPS (With STS Module)
Max. Charging/Discharging Power	50 kW	100 kW	Dimension (W x D x H)	800 x 800 x 2160 mm
Rated Voltage	400 V		Weight	520 kg 750 kg
Grid Voltage Range	340 ~ 460 V		Grid Regulation	AS 4777.2/3
Power Factor Range	1 (lagging) ~ 1 (leading)		Safety	IEC 62109-1&-2
Battery Technical Specification				
Module Model	M48112-S		Module Capacity	5.7 kWh
Module Weight	65 kg		Module Nominal Voltage	51.2 V
Module Dimension (W x D x H)	450 x 580 x 165 mm		Cycle Life	≥ 6000
Max. Charging/Discharging Current	112 A (1C)		Operating Temperature Range	-10 °C ~ 50 °C*
High Voltage Control Box Technical Specification				
BMU Model	HV900112 (TOP BMU required with more than one cluster)			
DC Voltage Range	200 ~ 900 V			
Nominal Output Current	112 A			
Battery Modules Connection	5 ~ 9 M48112-S in series in one cluster			
Clusters Connection	Max. 20 clusters in parallel			

*When the temperature is below 0 °C or above 40 °C, the performance will be limited.



T50/T100 System Diagram



Headquarter: Alpha ESS Co., Ltd.

+86 (0) 513 806 068 91

info@alpha-ess.com

www.alpha-ess.com

JiuHua Road 888, Nantong High-Tech Industrial Development Zone, Nantong City, 226300

Germany: Alpha ESS Europe GmbH

+49 (0) 6103 / 459 160-1

europe@alpha-ess.de

www.alpha-ess.de

Paul-Ehrlich-Straße 1a, 63225 Langen, Hessen

Australia: Alpha ESS Australia Pty. Ltd.

+61 (0) 402 500 520 (Sales)

+61 1300 968 933 (Technical Support)

australia@alpha-ess.com

www.alpha-ess.com.au

Suite 1, Level 1, 530 Botany Road, Alexandria, NSW, 2015

Italy: Alpha ESS Italy S.r.l.

+39 (0) 599 239 50

info@alpha-ess.it

www.alpha-ess.it

Via Loda, 17-41013 Castelfranco Emilia (MO)